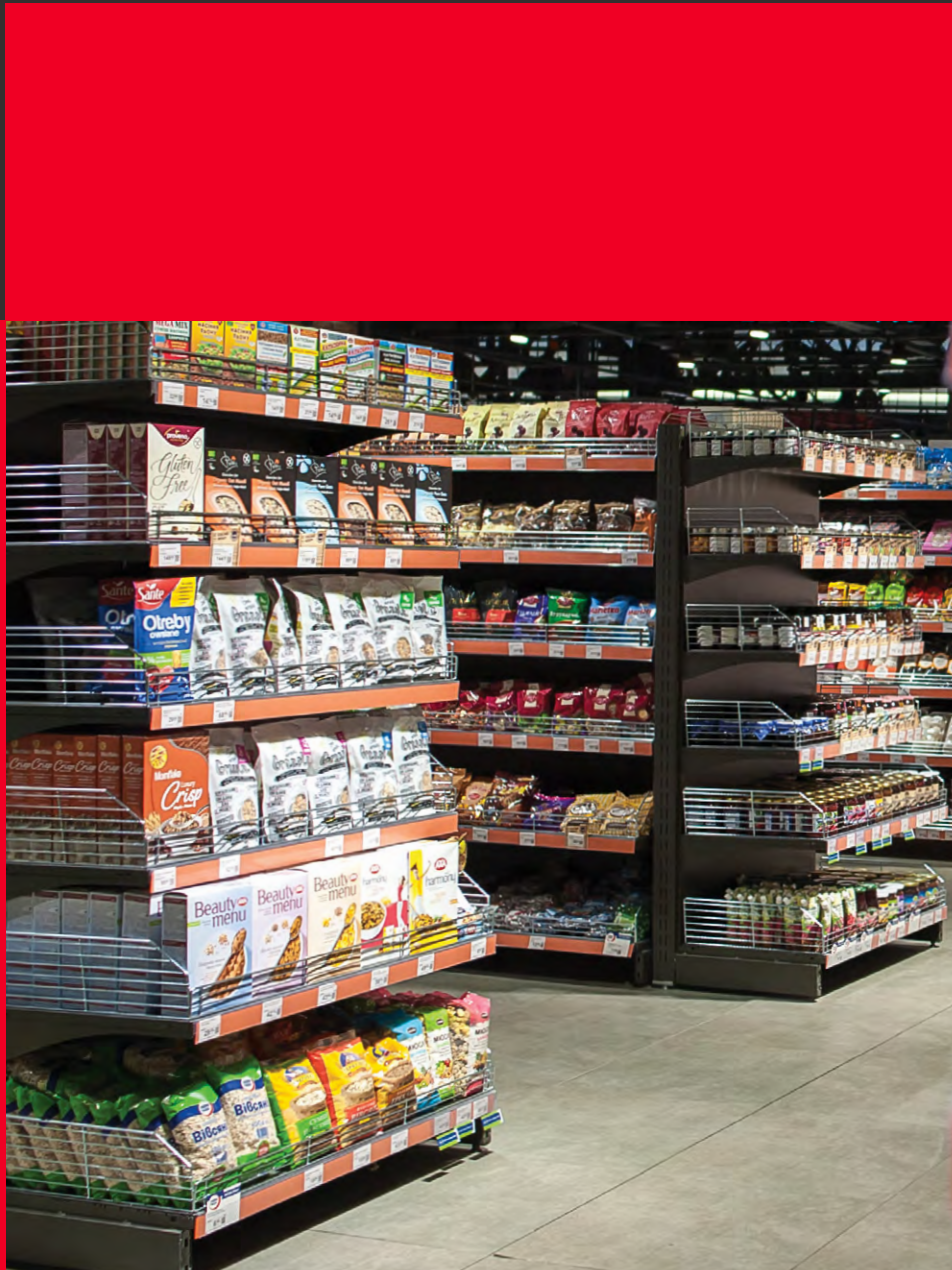


Store Fixtures



WE CREATE RETAIL NEW

WE are an international company, that operates on more than 60 countries, runs over 112 000 m² production, rules its great experience backed up on bright competence in creating unique retail solutions; the Team of more than 3000 skilled professionals who work in offices located in different countries.

CREATE complete solutions to make the best of shopping experience — is what we do now and will do in the future! Modern-Expo is a company that aims at customized solutions, so that retailers are receiving the unique style and identity. To make this real we have our own R&D department — team of dedicated designers and engineers ready to implement the most outstanding ideas.

RETAIL continues to change. Moreover, it aims to stand out in a crowd suggesting people the best shopping experience ever. Modern-Expo Group is the company that meets challenges of the reality that grasp the whole industry.

NEW trends from unusual perspectives, fresh ideas implemented in design, approaches and Smart-directions — Modern-Expo has the competence and suggests the best!

Ukraine

Lutsk



45+

dealers

112 000

m² production

3000+

employees

11

offices

24

years of experience

60+

countries

Poland

Lublin



Ukraine

Verkhnodniprovsk



Belarus

Vitebsk



European Standards

The company has certificates of quality issued by the independent laboratory TÜV Rheinland Group and Bureau Veritas — one of the leading international certification companies.

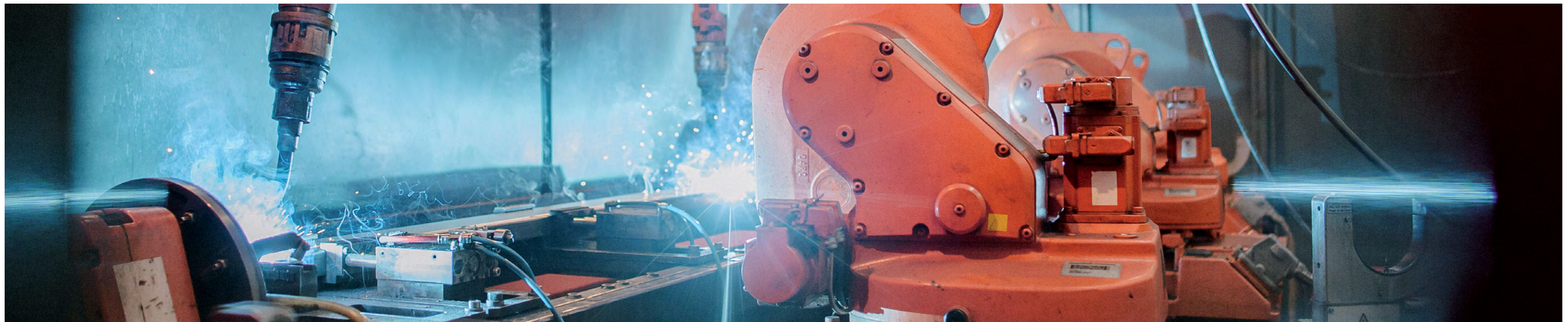
All Modern-Expo solutions comply with European Standards of Safety and Quality (EN and FEM), as well as the national standards GOST, DSTU.



Manufacturing Technologies

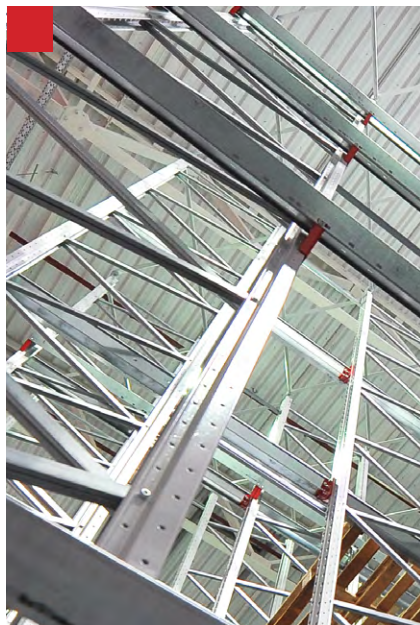
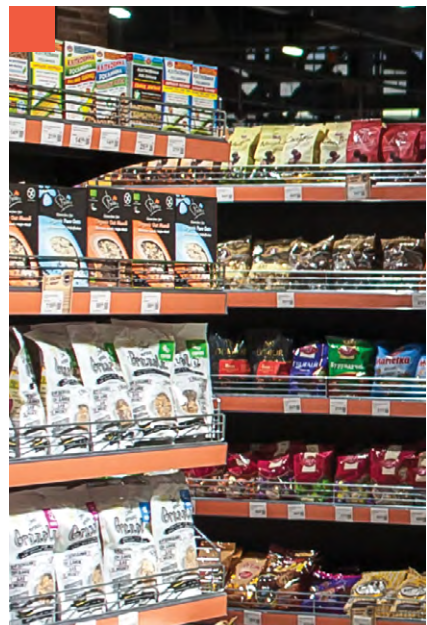
Modern-Expo Group has a huge intellectual and manufacturing potential. Its production facilities are situated in Lutsk (Ukraine), Vitebsk (Belarus), and Verkhnodniprovsk (Ukraine). The logistics hub is situated in Lublin (Poland).

The total area of company's manufacturing facilities comprises 112 000 sq m. The company runs highly efficient and modern technologies to deliver the best value to the existing and future customers.



We Work For

- Food Retail ←
- Non-Food Retail ←
- FMCG Producers ←
- HoReCa ←
- Storage & Warehousing ←
- E-Commerce ←



Modern-Expo Identity

- Integrated Approach**
We are working with the entire store concept in mind and provide complete solutions to our customers.
- Operational Excellence**
We are mastering process management to come up with the most effective solutions.
- Win-Win Partnership**
We are winning with our customers by understanding their needs and are ready to run the extra mile for them.
- Flexibility**
We are eager to challenge our own and our customers convictions about what is possible.

Solutions

Partners



→ **Store Fixtures**

- Refrigeration Equipment**
- Storage Equipment Solutions**
- HoReCa**
- POSM**



Shelving Systems



Modern-Expo shelving is a perfect solution for different retail formats. Design and building options are tailored to the store's concept and provide the most efficient use of shopping areas. Wide range of accessories makes it possible to offer solutions for any types of goods: food and non-food.

Shelving System KM

Shelving System KM basis of retail space.

Shelving systems are developed taking into account the main principles of merchandising: easy and quick access to products, efficient layout and possibility of goods allocation.

Key features

- › Modular design
- › Different size options
- › Wide range of accessories
- › Additional reinforcement for heavy loads
- › LED backlight

Advantages

- › Efficient design
- › Wall and island design types
- › Integration with storage racks



Shaping the Retail Space

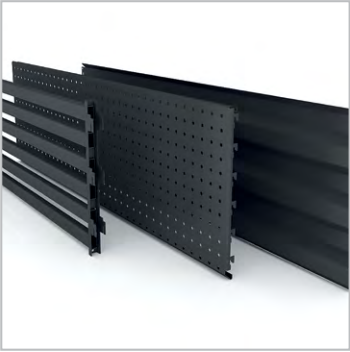
Back Panels



Shelves Design



Middle Back Panels



LED Lightning



Gondola Solutions

› Standard solution



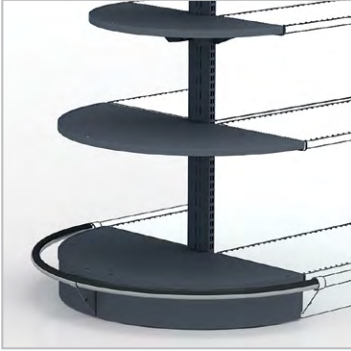
› Solution with rounded corners



› Solution for heavy loads



› Round gondola



Shelving System FS

Shelving System FS makes retail space more efficient and convenient.

FS system stands out from the standard shelving as it suggests additional aisles space. Middle back panel together with new shelf size gives extra space which means more comfort for customers and efficient merchandising.

Key features

- › Central back panel
- › Modular design
- › Different size options
- › Wide range of accessories
- › LED backlight

LESS

- › Shelf depth
- › Stock
- › Weight
- › Disorder

MORE

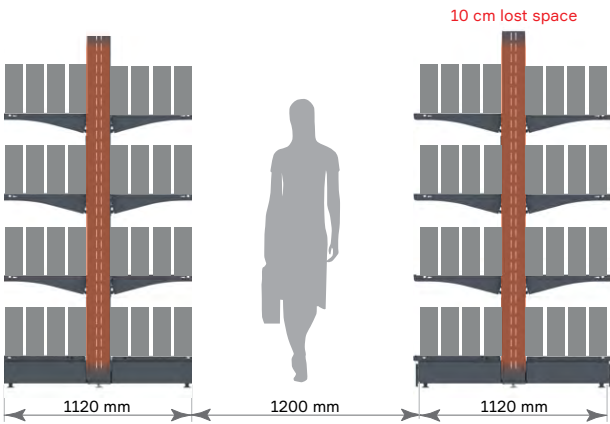
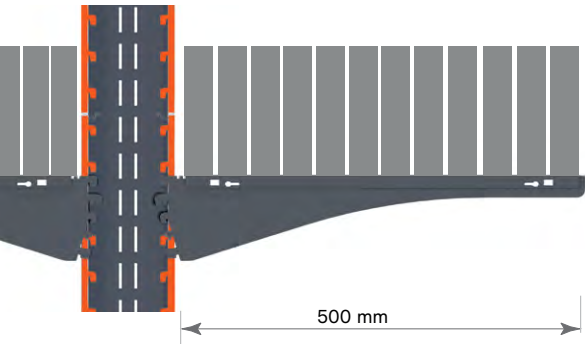
- › Shopping space
- › Stock control
- › Cost efficiency
- › Customer comfort



Less is More

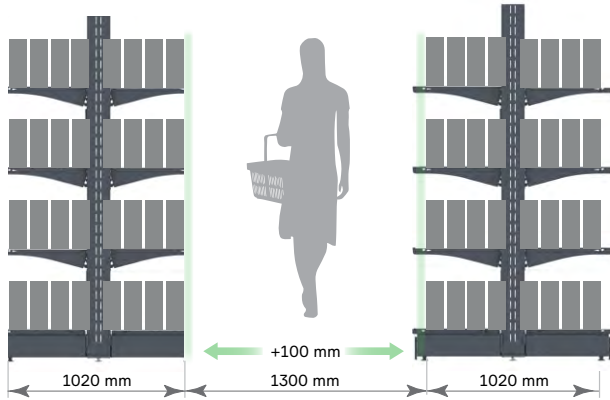
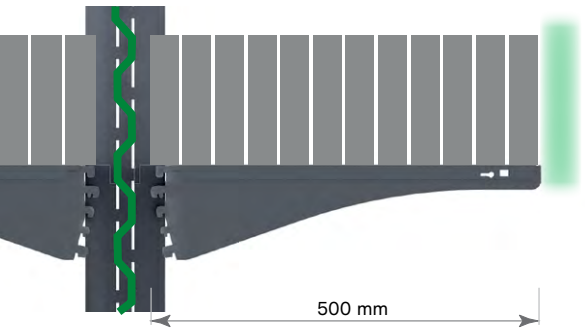
KM system

- › Two back-panels — 10 cm lost space



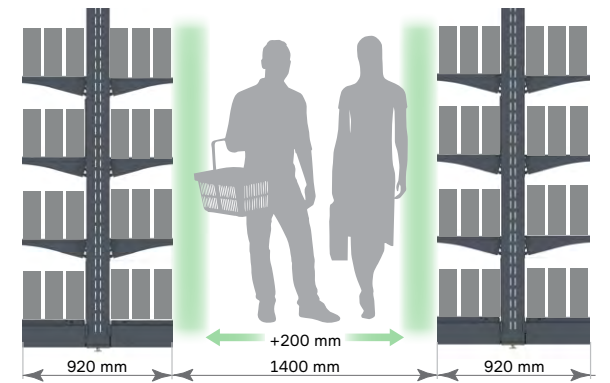
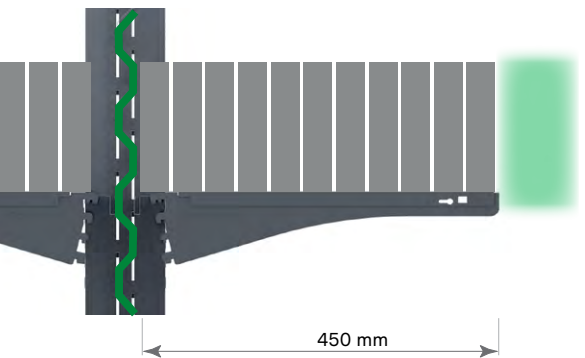
FS Shelving system

- › Middle Back Panel substitutes two back-panels. Gives extra 10 cm space in the row



Middle Back Panel

- › 5 cm reduced depth. Give extra 20 cm space in the row



Wire Solutions

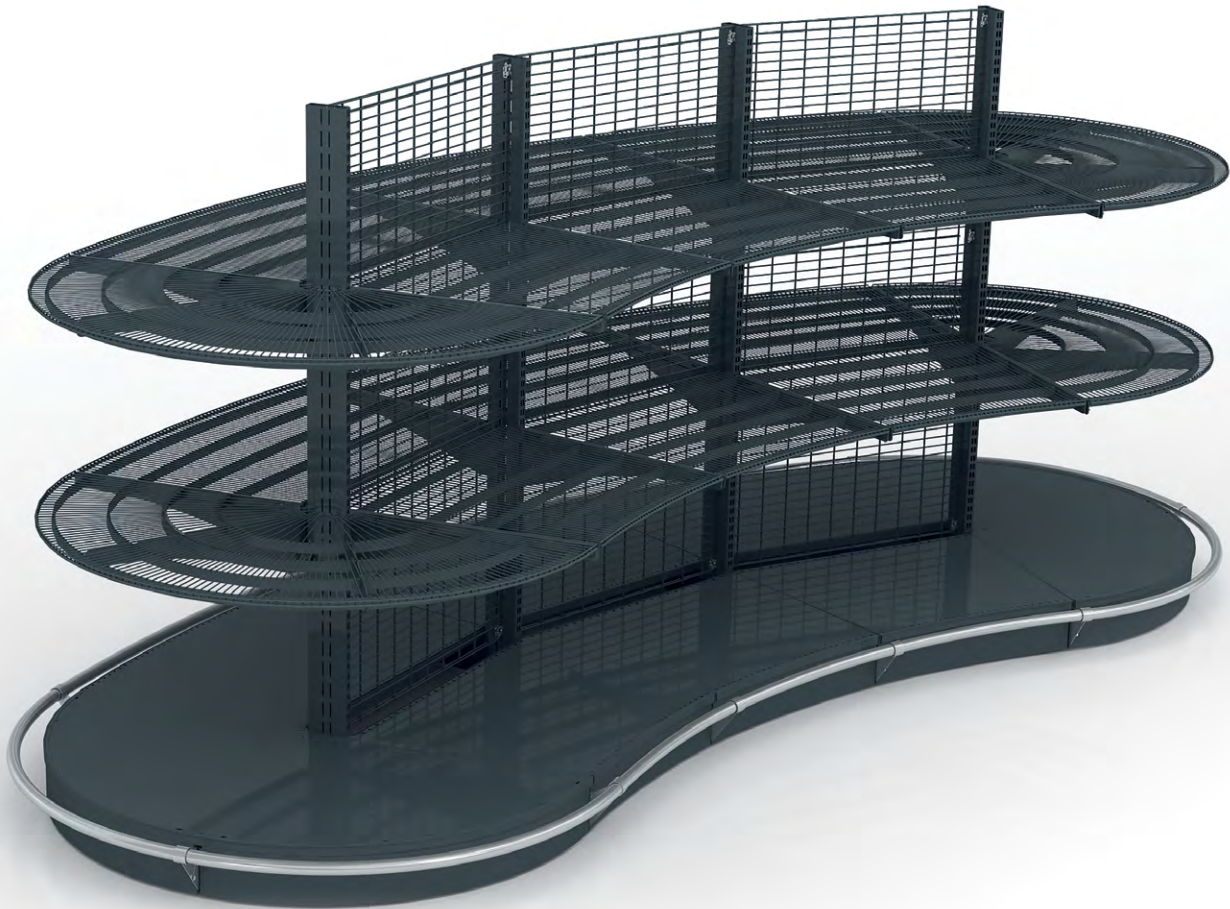
Wire shelving brings the products in the centre of attention. Due to its flat design, the shelving provides the maximum of merchandise density, looks stylish and appealing.

Key features

- › Modern design
- › Perfect solution for different retail formats
- › Less metal used in shelving design

Advantages

- › Focus on displayed products
- › Easy access from different sides
- › Easy cleaning

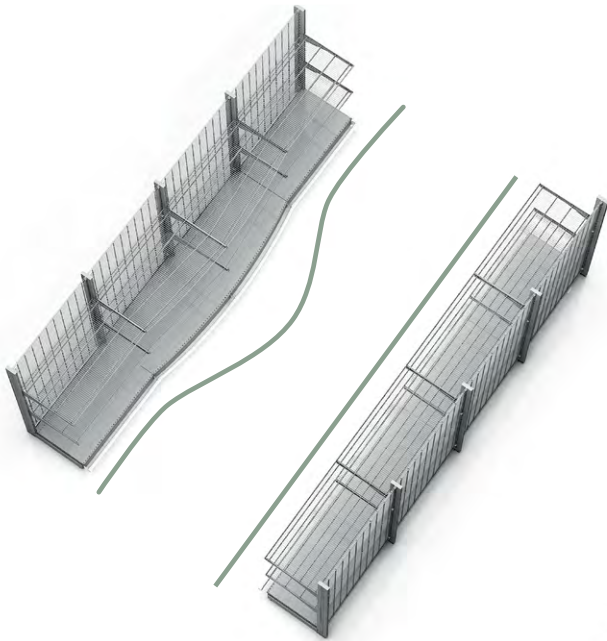


Customized Solutions

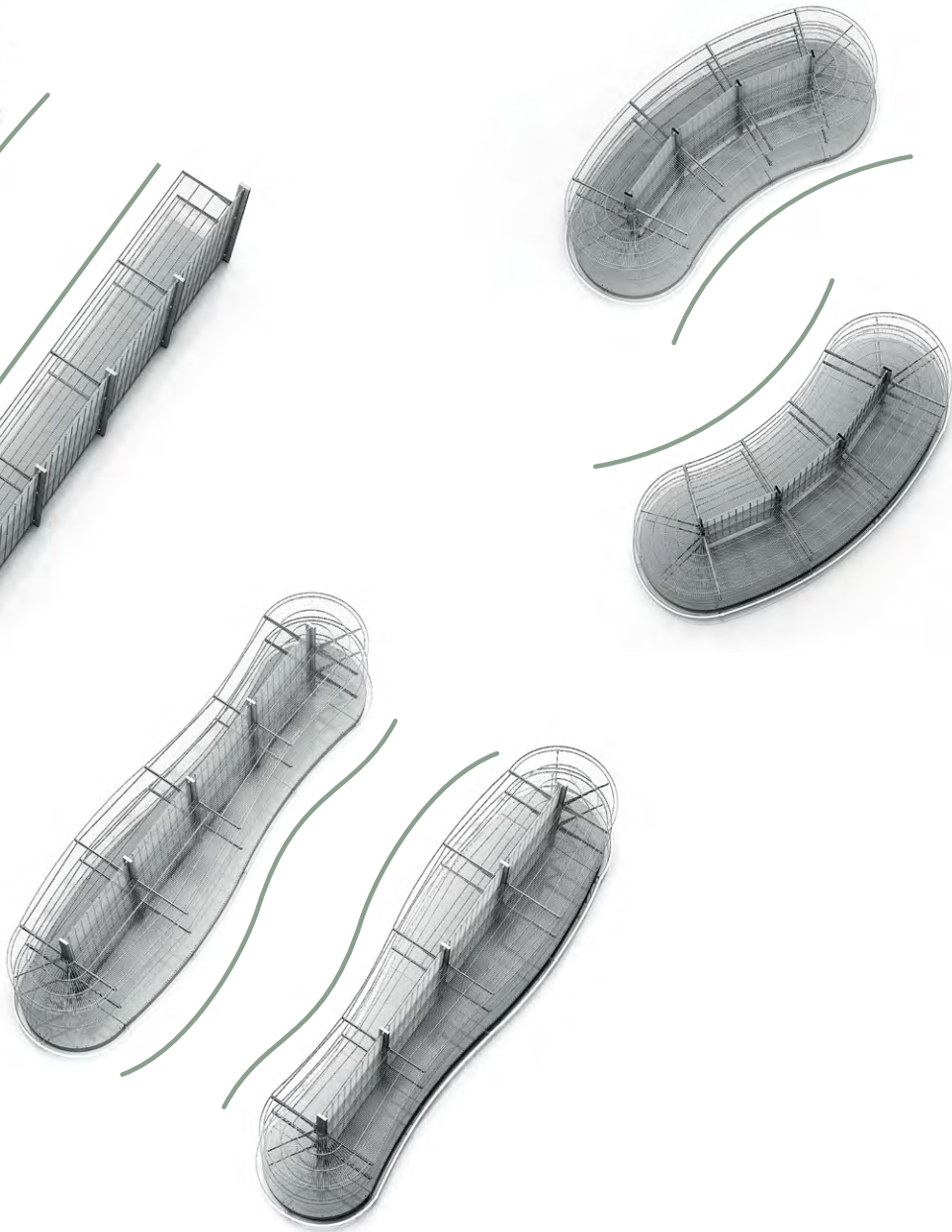
Straight and curved display units meet all merchandising requirements and stand out from the standard shelving systems.

Different design options help to reach the necessary customization within the store and make the customer totally absorbed by the perfect shopping experience.

Focus on the Product



Customized Solutions



Solutions for Fruits & Vegetables

Bright and fresh — these are the key features that attract customer's attention at any grocery department. Perfectly organized it makes the shoppers spend more time choosing favourite products and enjoy the atmosphere.

Each of these shelving types is designed to create the atmosphere of a traditional vegetable market with fresh home fruits and vegetables.

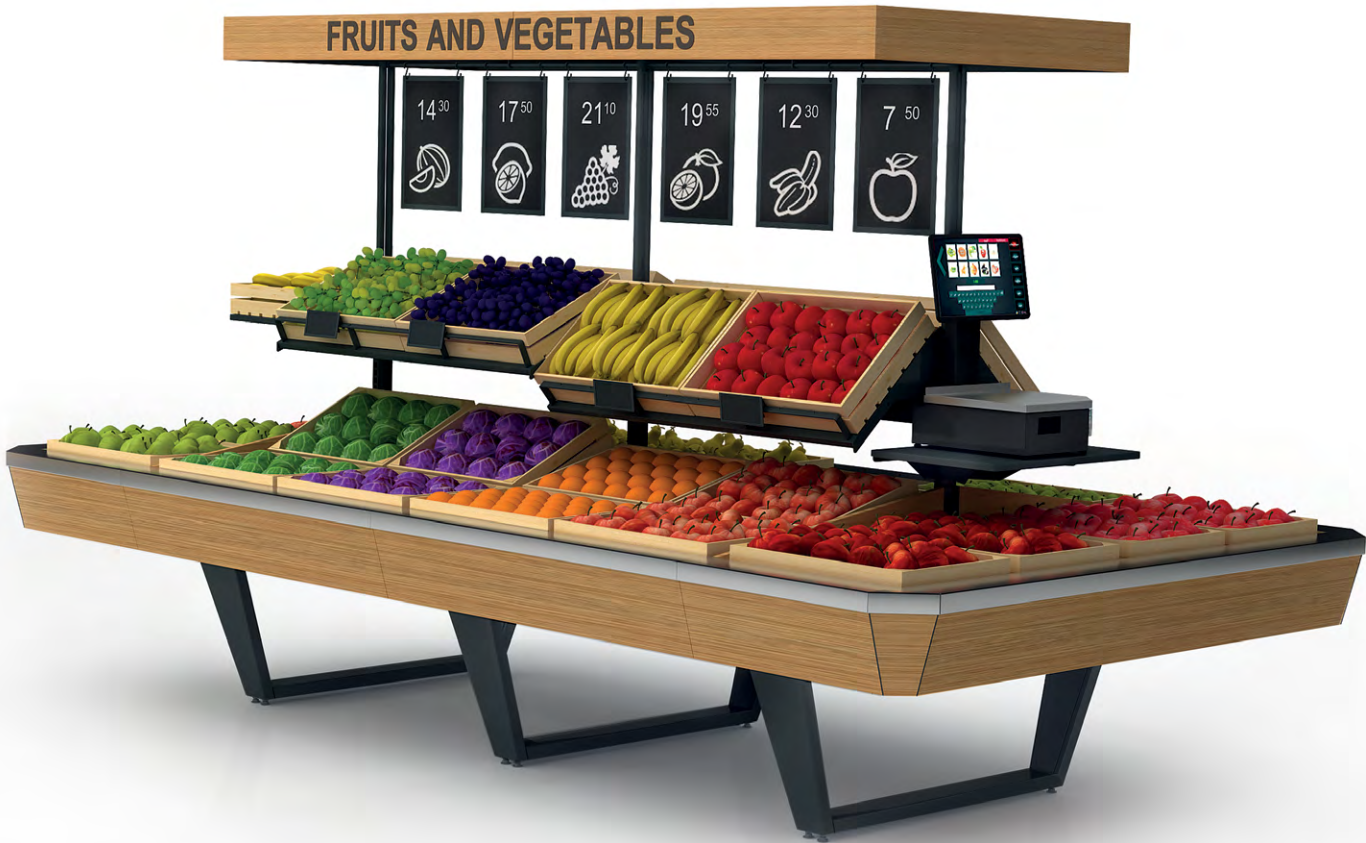
Key features

- › Customized solutions: the design and number of shelves can be modified
- › Shelving can be equipped with pull-out bottom drawers and wheels



Island Shelving

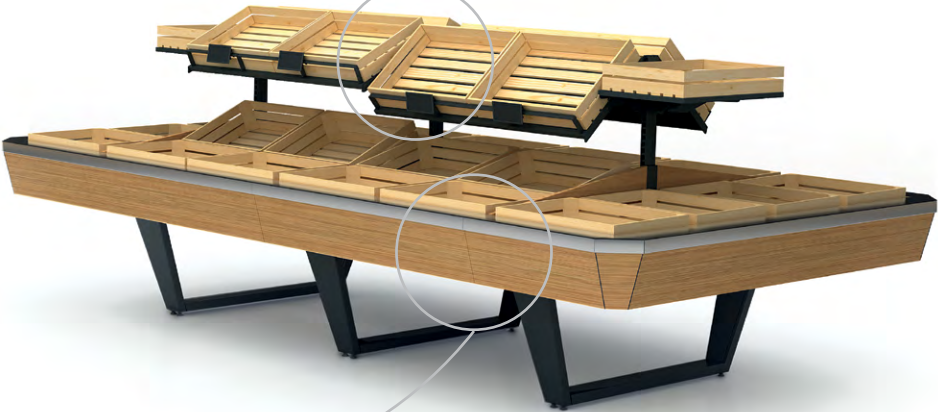
Island shelving and two levels for products layout provide an easy access from different sides. Perfect design attracts customers' attention on goods and motivates to purchases. Modular sections allow different product presentation.



Shelves inclination can be modified — allows better product observation



Shelves for waste collection



Barrier-dividers of the bottom shelf. Stainless steel surfaces: hygiene, durability and corrosion resistance



Wall Shelving

The combination of materials (wood and metal) will complement the interior of the store and enhance its image. The shelving is equipped with ergonomic shelves, transparent sidewalls and a canopy with mirror for the most effective exposure and goods observation.

Key features

- › Combination of materials
- › Ergonomic shelves
- › Stainless steel surfaces
- › Adjustable shelves inclination
- › Reliable barriers of the bottom shelf
- › Transparent acrylic sidewalls
- › Canopy with a mirror

Advantages

- › Perfect goods observation
- › Efficient product layout; easy rotation



Transparent acrylic sidewalls. Canopy with mirror



Shelves inclination allows perfect goods observation



Reliable barriers of the bottom shelf



Stainless steel surfaces



Perfect product layout, easy rotation



Solutions for Bakery

Bakery department is one of the most attractive areas in any store format. Properly merchandised, it makes a fabulous first impression on any customer and stimulates purchases.

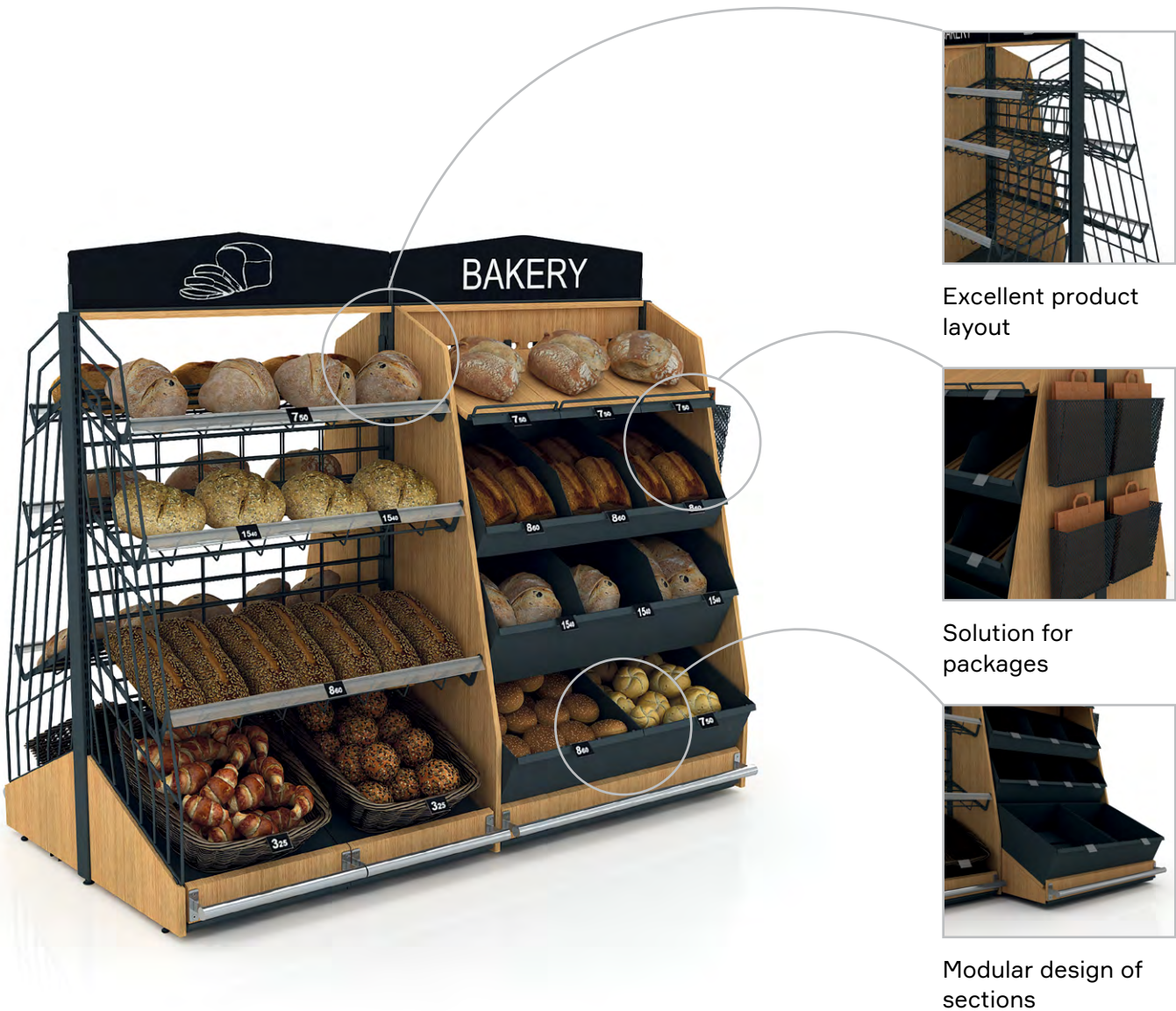
Modern-Expo suggests special shelving for bakery that stands out with appealing design, ergonomics and functionality.

Key features

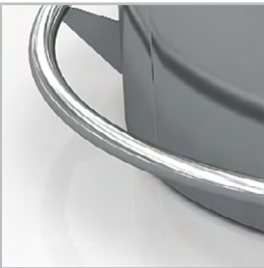
- › Modern design
- › Perfect solution for different size of products
- › Water-based lacquer coating of wood surfaces
- › Customizable solutions
- › Perfect product observation
- › Durability



Island Shelving



Acrylic barriers



Round safety barrier



Shelves of natural wood



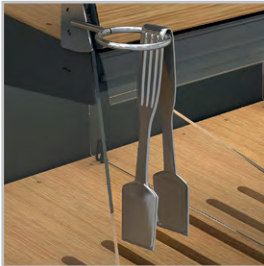
Shelves for crumbs



Wall Shelving



Shelves for crumbs



Accessories



Sliding drawer doors



Movable section dividers



Warm white LED-backlight



Baguette solutions



Warm white LED-backlight



Solution for packages



Shelves with lift doors



Convenient back loading of goods

Wine&Spirits Solutions

Versatile and appealing, wine racks are the most popular type for efficient drinks presentation. With a variety of finishes and styles, warm backlight and outstanding design wine shelving emphasizes the store's identity and creates a cosy atmosphere.

Key features

- › Combination of different materials
- › Modular design
- › Wide range of accessories and additional decor
- › Inclined shelves for better product presentation
- › Rubber inserts for products fixing
- › Backlight to highlight the product



Dispensers for bottles



Rubber inserts for fixing the bottle



Pullout drawers





GOOD FOOD

Food Courts

COFFEE

CAPPUCCINO	2.5
MACCHIATO	2.5
FLAT WHITE	3.0
LONG BLACK	2.5
LATTE	3.0
ESPRESSO	1.5
MACCHIATO	2.5

DRINKS

JUICE	2.5
SMOOTHIES	3.5
TEA	2.5
WATER	1.0
HOT COCOA	3.5
CHAI LATTE	3.5
SODA	2.0

CAKES

CHEESE CAKE	3.5
CHOCOLATE CAKE	4.5
LEMON CAKE	4.0
TIRED CAKE	3.0
CHOCOLATE CAKE	4.0
CHOCOLATE CAKE	3.0
CHOCOLATE CAKE	2.5

SNACKS

HALF CHOCOLATE BROWNIE	3.0
HALF CHOCOLATE BROWNIE	4.0
CHOCOLATE BROWNIE	4.0
CHOCOLATE BROWNIE	3.0
CHOCOLATE BROWNIE	3.0
CHOCOLATE BROWNIE	3.0
CHOCOLATE BROWNIE	3.0

Food courts facilitate mall shopping. They keep customers longer around giving the new social experience. Being a perfect place to meet, relax, have a tasty break while shopping makes food courts an important feature of malls' success. Modern-Expo offers ergonomic solutions for food courts: coffee-modules, counters, shelving, food reception area, tables, chairs and sofas.

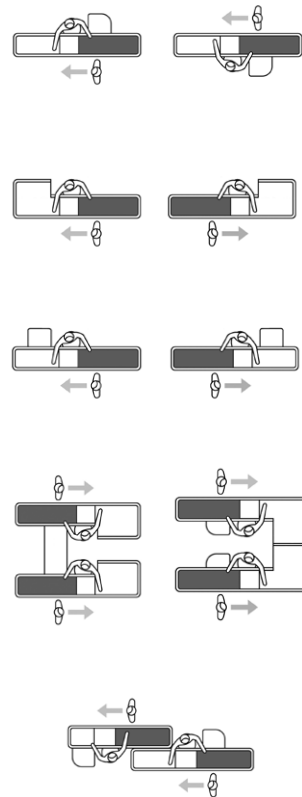
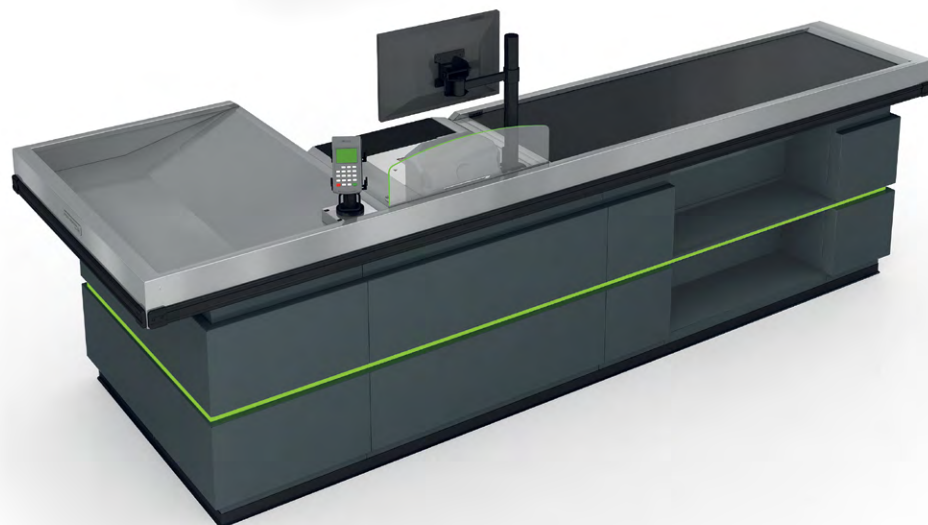
Checkout Area

Checkout area is an important part of any store — it is not just the space to ring up customers. With the right approach it can also drive sales and give shoppers lasting positive impression. Modern-Expo suggests different checkouts solutions suitable for any retail formats, standing out both with appealing design and ergonomics.

DIAMOND Checkout

Designed with the stainless steel bumper, the checkout gets the most of reliability and style.

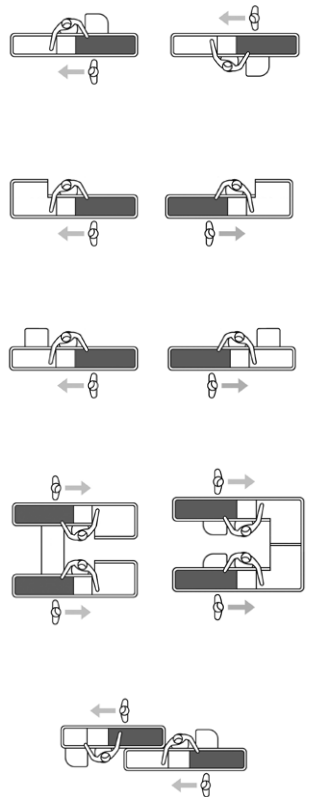
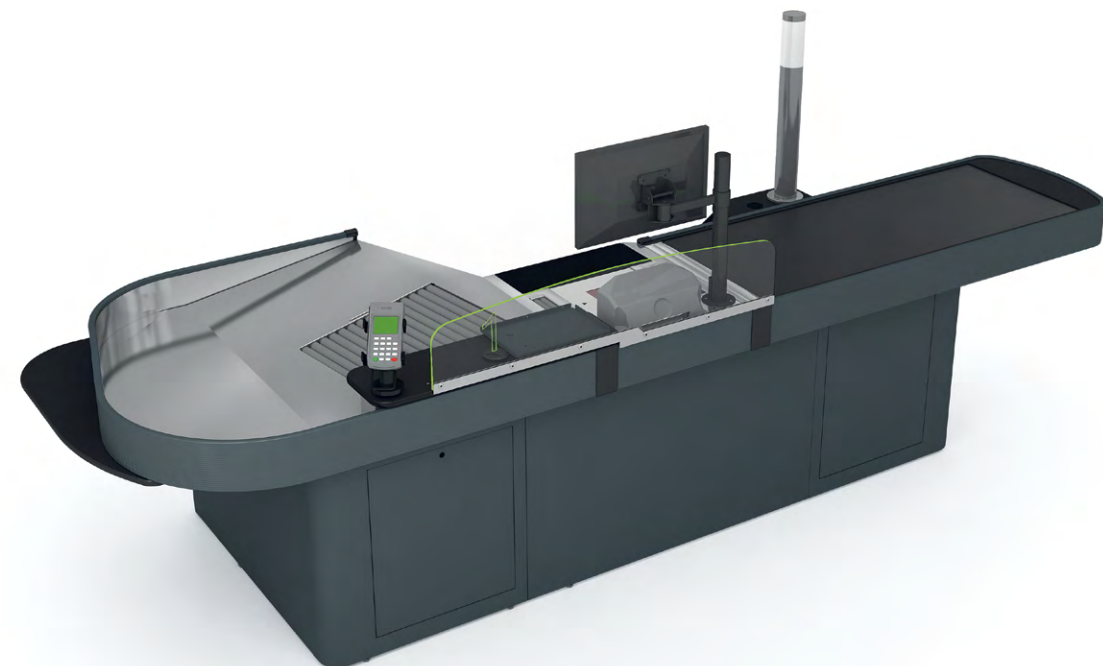
- › Long-term operating
- › Premium segment
- › Highest quality
- › Wide range of accessories
- › Working place and service ergonomics
- › IT-equipent integration



FLEXI Checkout

The perfect choice for any retail format.

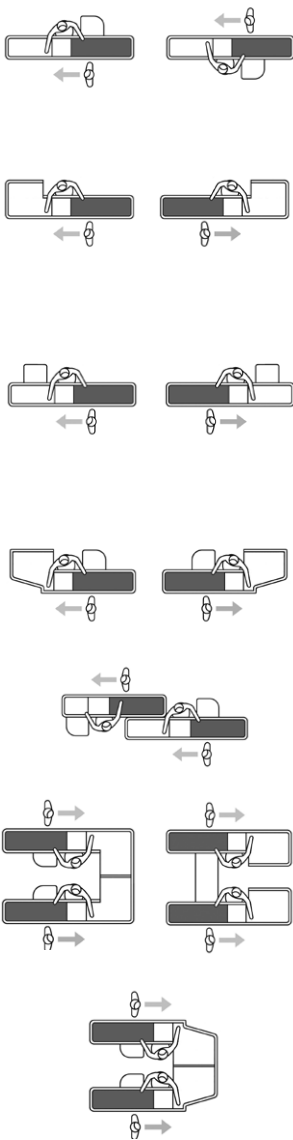
- › Shapes diversity
- › Any part of a checkout can be modified and customized
- › Modular system
- › Optimal «price-quality» ratio
- › Safety service



CLASSIC Checkout

Reliability proved by years of experience.

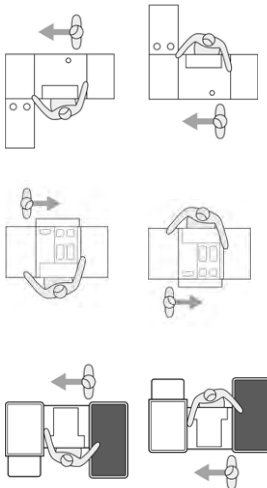
- › Long-term operating
- › Best materials used
- › Wide choice of bumper colours (RAL)
- › Wide range of accessories
- › Easy to install



EXPRESS Checkout

The perfect solution for any store with a small area for checkouts. It is also used as an additional «one basket» cash module for any store format.

- › Compact design
- › Fast service
- › IT-equipment integration
- › Long-term operating
- › Space-saving
- › Easy to install



Self-Checkout

Key features

- › Ergonomics and reliability
- › Capacitive touchscreen
- › Cash management system (option)
- › Test scales up to 200 kg (option)
- › Frame color selection
- › Easy installation and maintenance

Advantages

- › Saves money: checkout substitutes the work of several cashiers
- › Saves time
- › No waiting in lines
- › Efficient use of the retail space



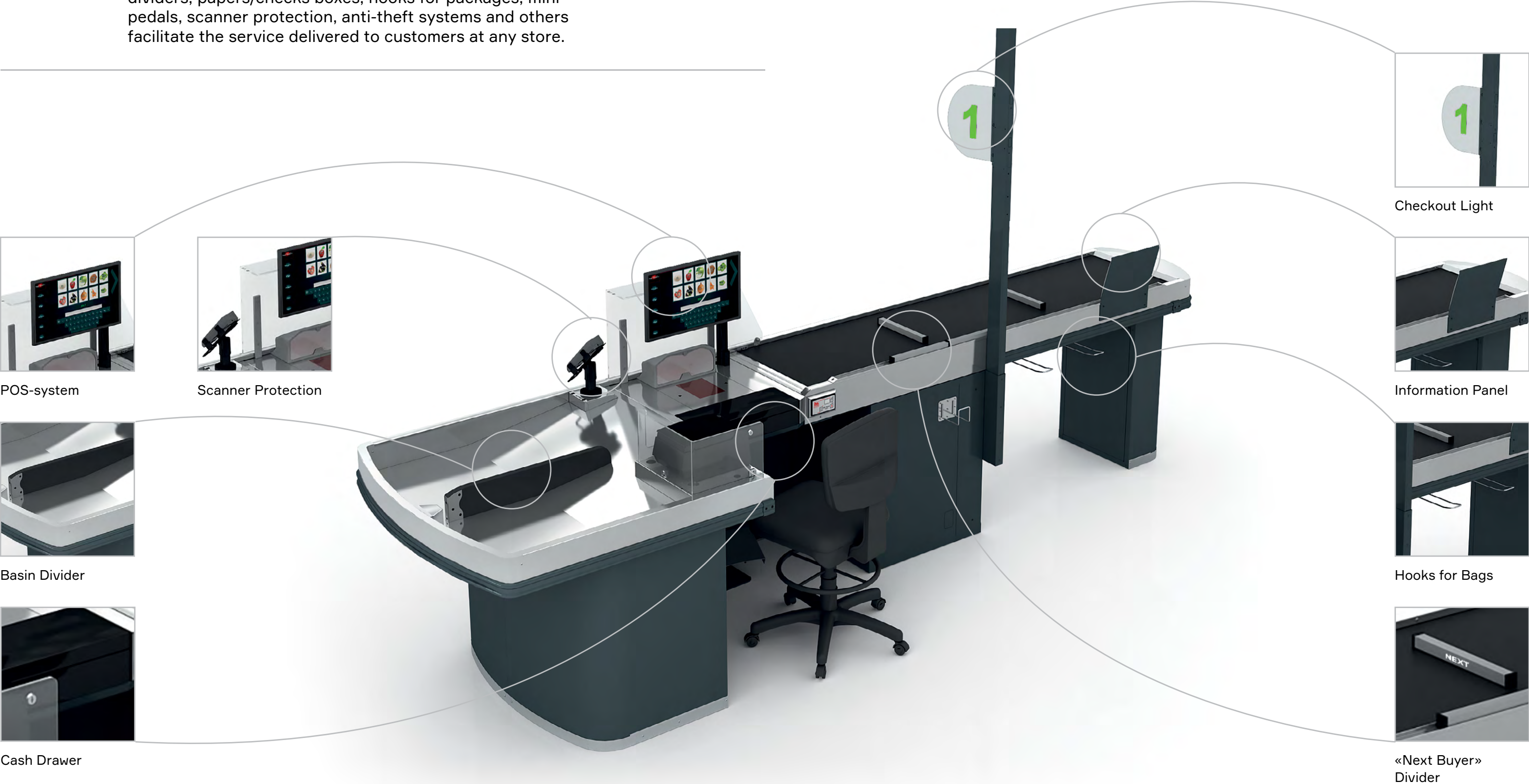
Solutions for Impulse Purchases

- › Increase average sales check
- › Facilitate goods turnover
- › Additional promotion place
- › Kids merchandising area



Accessories

Additional accessories for checkouts make the cashier's work more efficient. Cash drawers, shelves, purchase dividers, papers/checks boxes, hooks for packages, mini pedals, scanner protection, anti-theft systems and others facilitate the service delivered to customers at any store.



POS-system



Scanner Protection



Basin Divider



Cash Drawer



Checkout Light



Information Panel



Hooks for Bags



«Next Buyer»
Divider



Portfolio

Carrefour

Location Warsaw, Poland
Services Manufacture, Supply, Installation
SQM 5 500 m²



Carrefour

Location Warsaw, Poland
Services Manufacture, Supply, Installation
SQM 5 500 m²



Fozzy

Location Kyiv, Ukraine
Services Manufacture, Supply, Installation
SQM 6 700 m²



AD DELHAIZE

Location Andenne, Belgium
Services Concept, Planning, Manufacture, Supply, Installation
SQM 1 700 m²



My Auchan

Location Kyiv, Ukraine
Services Manufacture, Supply, Installation
SQM 1 500 m²



My Auchan

Location Kyiv, Ukraine
Services Manufacture, Supply, Installation
SQM 1 500 m²



Modern-Expo Service Support

High standards of customer care

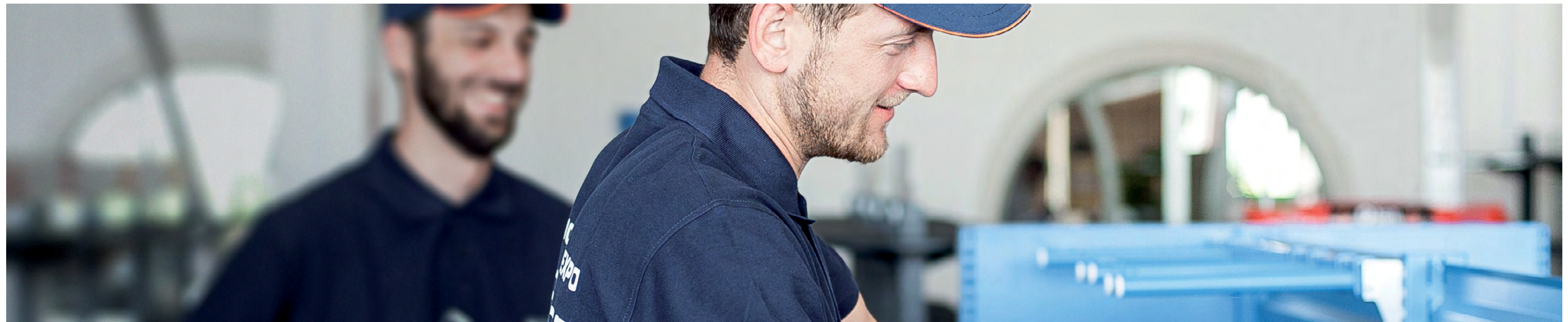
Modern-Expo Service means a high-quality work of professionals, an individual approach to each client and over 10 years of experience in the market.

We take care about our customers at all stages of cooperation. Our priority task — service of the international level.

We also offer complete after-sales service and a wide range of spare parts for different retail solutions

Modern-Expo Service Offers

- › Qualified help from specialists with ten years of experience
- › Win-win partnership
- › Integrated approach
- › Warranty obligations
- › Long-term equipment's exploitation
- › Certified products (according to European and national standards)



Scan to
Get the
Catalogue:



modern-expo.com

Head Office:

JV Modern-Expo Ltd.
Lutsk, Ukraine
Tel.: +380 (332) 78 95 00
info@modern-expo.com

Office in Germany:

Modern-Expo GmbH
Berlin, Germany
Tel.: +49 (0) 30 417 44 603
Fax: +49 (0) 30 417 44 604
officeberlin@modern-expo.de

Office in France:

Modern-Expo SAS
Paris, France
Tel.: +33 (1) 77 19 38 81
contact@modern-expo.fr

Office in Poland:

Modern-Expo S. A.
Lublin, Poland
Tel.: +48 (81) 744 50 50
biurohandlowe@modern-expo.pl

Office in UK:

Modern-Expo UK Limited
London, UK
Tel.: +44 (0) 7534 635 267
Tel.: +44 (0) 7534 635 103
uk.sales@modern-expo.com

Office in Russia:

Modern-Expo Ltd.
Moscow, Russia
Tel.: +7 (495) 665 34 42, 665 34 57
moscow@modern-expo.com

Office in the Middle East:

Modern Store Fixtures
Trading LLC
Dubai, UAE
Tel: +971 (0) 4 294 8247
Fax: +971 (0) 4 255 2136
msft@emirates.net.ae